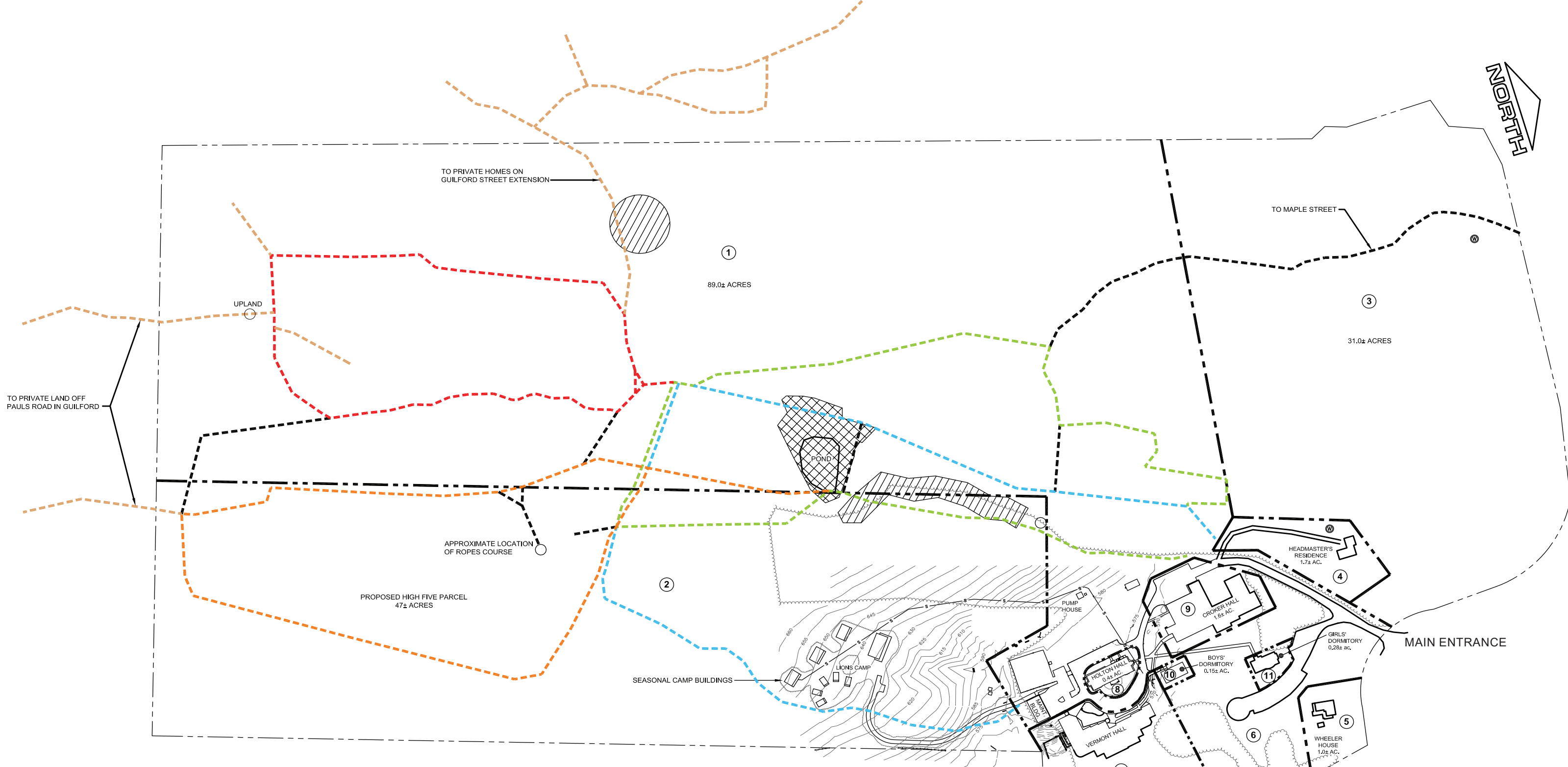





NORTH



**LEGEND**

- EXISTING PROPERTY LINE
- PROPOSED PROPERTY LINE
- TRAIL
-  RARE SPECIES \*
-  WETLAND \*
-  WELL \*
- s— SEWER LINE

\* AS SHOWN ON VT DEC ENVIRONMENTAL ATLAS, OCT. 3, 2015



**WINSTON PROUTY**

Center for Child and Family Development

209 Austine Drive  
 Brattleboro, VT 05301  
 Phone: (802) 257-7852  
 Fax: (802) 258-2413

The campus and trails are open to the public from dawn to dusk