

The Prouty Voice

July 2017

Volume 11, Issue 11

Note from Chloe Learey, Executive Director



Our Mission

The Winston Prouty Center for Child and Family Development provides inclusive education and family support to promote the success of children and families.

Inside this issue:

Note from Chloe	1
Office News	2
Community Page	3
CBS News	4-5
ELC News	6-7
Calendar	8

**209 Austine Drive
Vermont Hall
Brattleboro, VT 05301**

Phone:
(802) 257-7852

Fax:
(802) 258-2413

Website:
www.winstonprouty.org



Family Matters: A Community Without Services for Families

The short video "A Day Without Child Care," created by the Local Child Care Planning Council of Humboldt County, CA (<https://www.youtube.com/watch?v=BGpEXKgU20A>), takes a humorous lens to a very serious issue and demonstrates how everyone is affected when child care is not available. This impact would also be felt broadly if other services to families with young children were to be disrupted as well. For instance, if the services provided by Windham Child Care Association were to have gone away instead of becoming part of the services at Winston Prouty, families would not be able to access and understand their child care options easily, nor would those who are eligible for financial assistance be able to access care. Children who need specialized care would not receive it. The lack of these services might not be as immediate as child care being closed, but it would not take long for our economic engine to slow down because families could not access care. The longer-term outlook would also dim if children were not accessing quality care and thus building the foundation they need to develop into strong, thriving adults.

All aspects of our community are strengthened when families are supported to be successful, from learning about child development to building their parenting skills to helping them access resources like housing. Community-based integrated early childhood services that are provided at Winston Prouty connect many types of supports and opportunities for young children and their families from the prenatal period through age 6 (and beyond for child care financial assistance). When we have competent, confident families, we have children who can get to school regularly and on time, we have employees who are present and productive when at work, and we have adults who can better access existing services for mental health and substance abuse treatment. These are all things that contribute to a strong community. By adding services from Windham Child Care to Winston Prouty the services become more robust and families can more easily access what they need. Being part of the same organization makes it seamless and helps better align the system.

What will a community without services for families look like? Our struggle with workforce development and attracting young, entrepreneurial people to our region will get even harder. The numbers of children in protective custody in Windham County, which are the highest per capita in the state, will continue to grow. Children who have a hard time getting to school much less being successful there will fall through the cracks more quickly. Fortunately, Vermont is focusing attention on its youngest children and the environments in which they live, learn and play. It recognizes that investment in its youngest, including those least fortunate, will benefit everyone. In order to marshal and leverage our resources for the greatest impact – for all children, and particularly for vulnerable populations living in poverty – we need to help communities engage parents, businesses, government and all residents in building better futures for young children and their families.

James S. Marks, executive vice president of the Robert Wood Johnson Foundation and former assistant surgeon general and director of the National Center for Chronic Disease Prevention and Health Promotion at CDC, expressed a sense of urgency that we act now. "The science is clear, and the need is great," he said. "We may not know all we wish we knew but we need to act now. If we wait 5 years, we lose a generation."

As a community, we must find ways to not only engage and build partnerships with families but also secure stable and adequate funding. If we want our community and our state to thrive, we need to invest in our families and children through community-based programs and organizations that understand that child and family development are integral to our success.

Administration 802-257-7852

Chloe Learey
Lisa Whitney
Margaret Atkinson
Paula Schwartz
Sarah DiNicola
Mike Curtis

Executive Director
Director of Operations
Dir., Dev & Comm Rel
Development Support
Executive Assistant
Assistant

Ext. 301 chloe@winstonprouty.org
Ext. 302 lisa@winstonprouty.org
Ext. 307 margaret@winstonprouty.org
paula@winstonprouty.org
Ext. 309 sdinicola@winstonprouty.org

Wish List

- *Big Bibs
- *Highchair or Booster Seat w/Tray
- *Baby Carriers/Slings
- *Infant Swings
- *Bassinets
- *Boppy Pillows
- *Booster Seats
- *Baby Bath Tubs
- *Baby Mirrors
- *Rhino Balls

Important Number to Note!

Please note that if you need immediate assistance after the office is closed, and the classroom isn't answering their phone, please call the ELC cell phone at **802-246-7852**. This rings to a cell phone that the ELC Staff brings with them onto the playground in the afternoons.

Congratulations Winston Prouty Class of 2017!



Board of Trustees

Sue Dyer (President)
Frederic Noyes (Vice President)
Jon Neurock (Treasurer)
Ann Allbee (Secretary)

David Dunn
Rachel Henry
Thea Lloyd
Scott Lyford
Jenna Bagnall-Reilly

Management Team

Chloe Learey, Executive Director
Lisa Whitney, Director of Operations
Alison Wheeler, CIS Coordinator
Mary Coogan, Early Interventionist
Kim Paquette, ELC Program Coordinator

Community Page



One of the great benefits of 3SquaresVT is that children in households receiving it also automatically qualify for free school meals. Once the school year ends, summer can be a difficult time for many families to meet their nutritional needs. Fortunately, free summer meal programs for children are offered in many communities. Visit <https://www.hungerfreevt.org/summer-meals-site-lists/> to find a summer meals program, or call SEVCA for help locating a program.

3SquaresVT food benefits can also be used to buy seeds and plants to grow your own fruits and vegetables. Seedlings can be purchased wherever EBT cards are accepted. Over 40 farmers' markets across the state now accept 3SquaresVT for starter plants as well as fresh produce. To locate a site near you visit <http://vermontfoodhelp.com/farmers-markets>.

Households may also be eligible for Farm-to-Family coupons, which are used to purchase fresh produce at farmers markets. Starting June 26th, SEVCA will be distributing coupon books worth \$30 to eligible low-income households on a first-come, first served basis. Unfortunately, walk-ins cannot be accommodated. There are a limited number of coupon books available, so interested families and individuals are urged to **contact SEVCA at (800) 464-9951** as soon as possible, to make an appointment, to apply for a coupon book. Coupons must be redeemed by October 31.

Board of Trustees News

We are happy to announce that Jenna Bagnall-Reilly joined our Board of Trustees at our June 26th Annual Meeting. She is an energy economist/analyst with NMR Group. Jenna had been on the WCCA Board and agreed to continue on with the merger. She wants to be directly involved in early child care, and to give her support to providing children with a healthy start.



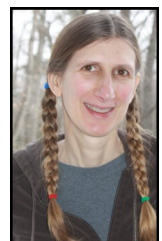
Chuck Cummings

Chuck Cummings, a long-time friend to Winston Prouty, passed away on June 26th. He was one of the founding members when WPC became a corporation, and served on the Board for many years. Chuck contributed so much to the Brattleboro community and his bright spirit (and clothing!) will be greatly missed.



Goodbye Lorraine

As many of you know, Lorraine Gilman, Assistant Teacher in the Oak Room, left the Prouty Center in mid June. She is going to be art teacher in Boston. Thank you, Lorraine, for your hard work and commitment to the Prouty children and families. Good luck with your new adventures!



Community Based Services (CBS) 802-258-2414

Lisa Adams	Developmental Educator	Ext. 224	ladams@winstonprouty.org
Kerri Beebe	Family Support/FSH Coordinator	Ext. 204	kerri@winstonprouty.org
Crystal Blamy	FSH Coordinator	Ext. 201	crystal@winstonprouty.org
Emily Clever	Housing Resource Coordinator	Ext. 203	emily@winstonprouty.org
Mary Coogan	Early Interventionist	Ext. 315	mary@winstonprouty.org
Willie Gussin	Family Support	Ext. 303	willie@winstonprouty.org
Kathy Hallock	Developmental Educator	Ext. 219	kathy@winstonprouty.org
Brandy Levesque	Consultation & Education, ECFMH	Ext. 228	brandy@winstonprouty.org
Shawn Lund	Consultation & Ed. Specialist	Ext. 216	shawn@winstonprouty.org
Kellyn McCullough	Family Support	Ext. 305	kellyn@winstonprouty.org
Ellen Ostrander	Early Interventionist	Ext. 227	ellen@winstonprouty.org
Sally Pennington	Maternal Child Health Nurse	Ext. 206	sally@winstonprouty.org
Megan Seidner	Early Interventionist	Ext. 226	
Joanne Shaw	Service Coordinator	Ext. 208	joanne@winstonprouty.org
Alison Wheeler	CIS Coordinator	Ext. 314	alison@winstonprouty.org
Tonya Kangas	CIS Child Care Coordinator	Ext. 312	tonya@winstonprouty.org
RoseAnn Grimes	Referral & Eligibility Specialist	Ext. 313	roseann@winstonprouty.org
Jeanna Genest	Eligibility Specialist	Ext. 311	jeanna@winstonprouty.org
Kristy Rose	Food Specialist	Ext. 317	kristy@winstonprouty.org
Maura Shader & Jennifer Emerson CIS Early Childhood Family Mental Health (ECFMH) Ext. 202			

News from Community Based Services

Community Based Services includes Children's Integrated Services (CIS), Child Care Support Services, and Family Supportive Housing. CIS is a resource for families when they have questions or concerns about their child's development during pregnancy, infancy and early childhood.

- ◆ We are happy to announce that Jean Vulté, ARPN, will be joining Prouty as a Maternal Child Health Nurse with CIS on July 17th. She has over 30 years of nursing experience, and is certified as a Women's Health Practitioner. We are excited to have her join our team.
- ◆ Kim Paquette, ELC Program Coordinator, and Shawn Lund, CBS Consultation and Education Specialist, attended "The Science of Early Learning and Adversity" training on June 22nd and 23rd at the Harvard Graduate School of Education.
- ◆ The Mother's Circle, a support group for mothers with infants up to 2 years, has added an evening group that meets the first and third Thursdays from 6:00 to 8:00 p.m. at the Early Education Services, 130 Birge Street. Child care and dinner are both provided. For more information, please contact Jessica Greene at 802-258-8723 or brattleborovillage@gmail.com

CBS Wish List

- ◆ Sally Pennington, CIS Nurse, is looking for a crib and a stroller. Please contact her at 802-380-8952 if you have one to donate.

Winston Prouty's **Family Supportive Housing Program (FSH)** assists chronically homeless families in finding stable housing and providing case management to support them in their housing. To celebrate, we want to provide families with New Beginnings Baskets on their move-in day. Our FSH program needs your help filling the baskets!

We are seeking :

- Monetary donation – any donation appreciated
- Batteries for smoke detector
- Safety covers for outlets
- Gift card – for food or merchandise, coupon for a discount
- Cleaning supplies such as dish soap, bleach, broom, dust pan, etc.
- Dish cloths and dish racks
- Picture frames, key chains
- Items such as band-aids, thermometer, ice pak for first aid kits



These baskets will also have helpful information about community supports and ideas for budgeting and saving. Our goal is to fill 20 baskets. In the meantime, please feel free to contact Kerri at 257-2101, ext. 204 if you have any questions. Thank you!

Resources

State-wide community resources	Vermont 2-1-1	2-1-1	www.vermont211.org
WIC	Vermont Department of Health	802-257-2880	www.healthvermont.gov
Mental health and substance abuse services	Health Care and Rehabilitation Services (HCRS)	1-888-888-5144	www.hcrs.org
Housing and other services for people in poverty	Southeastern Vermont Community Action (SEVCA)	802-254-2795	www.sevca.org
New Moms Network (Dawn Kersula, MA, RN)	Brattleboro Memorial Hospital	802-257-8278	E-mail: dkersula@bmhvt.org www.bmhvt.org
Local event listings and information	Parent Express	603-352-1234	www.sentinelsource.com/parent_express/
Vermont's Early Childhood State Advisory Council	Building Bright Futures	802-876-5010	buildingbrightfutures.org/
Program for early childhood education, health, nutrition for low income children and their families	Head Start	802-254-3734	www.headstartprogram.us/state/vermont/
Indoor play space for children 0-8 years old and their caregivers	KidsPlayce	802-254-5212	www.kidsplaycevt.org

Early Learning Center

802-257-2101

ELC Program Coordinator

Kimberley Paquette

Ext. 306

kim@winstonprouty.org

ELC Administrative Coordinator

Angela Hoag

Ext. 210

angela@winstonprouty.org

Outreach Specialist

Sueño LeBlond

Ext. 229

sueno@winstonprouty.org

Teaching Staff

Acorn: Nancy McMahon, Michelle Goodwin, Mandi Martin

Ext. 218

nancy@winstonprouty.org

Elm: Susan Heimer, Allie Barrett

Ext. 207

susan@winstonprouty.org

Maple: Amy Fulton, Mindy Brennan

Ext. 205

amy@winstonprouty.org

Oak: Sarah Bemis, Alyssa Kelly

Ext. 217

sarah@winstonprouty.org

Birch: Jamie Champney, Kim Jacques, Alfred Hughes Jr.

Ext. 220

jamie@winstonprouty.org

Floaters: Lyn Call, Sara Fradkin, Brianna Root, Kathy Wright

Non-Teaching Staff

Liz Martin
Paul Rossi

Volunteers

Susan Mandell Bob Peeples
Amelia Goodnow Kayla Parro

Acorn Room (Infants) Michelle Goodwin went to Budapest, Hungary, for a week in May to take a training for infant/toddler caregivers at the Pikler Institute. This is where Dr. Emmi Pikler and Magda Gerber originated their approach to group child care. It is now known as The Pikler Method or RIE. This is an approach that the Acorn Room has been inspired by and has integrated into the caregiving routines and core curriculum in their room

The training Michelle went to focused on caregiving practices; especially diapering, feeding and napping. She got the opportunity to listen, ask questions, and speak to many of the caregivers (present and past). Anna Tardis (Emmi Pikler's daughter!!) also lectured throughout the week. Everyone who spoke was so warm and gentle. They all had so much passion and heart for children. The most significant words of wisdom Michelle received from the teachers was to go slow and truly enjoy the time spent with children. Another big reminder was to speak with the children during caregiving routines such as diapering. Ask the child questions, wait for a response, comment on the on the images on their diapers and clothing, talk with them about the toys they were playing with that day, and, above all, be present. Anna Tardis reminded us not to get discouraged, "It takes many years to get this approach right. Be gentle with yourselves. Take it one step at a time."

"I am so grateful that I got this opportunity," said Michelle. Since her return, the Acorn Room has been working to implement more of the Pikler spirit into the classroom. We have been slowing down our mornings, spending more time connecting with the children during diaper changes, and taking everything one step at a time. The children have responded delightfully to this. It is truly a wonderful feeling when you can let go of the hustle, bustle and pressure of the day, to embrace the attitude of no hurry, no rush and bountiful joy.

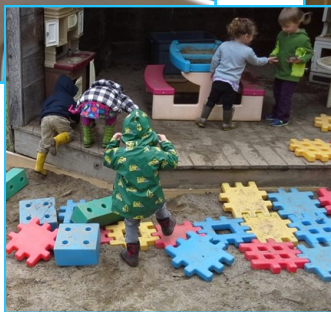
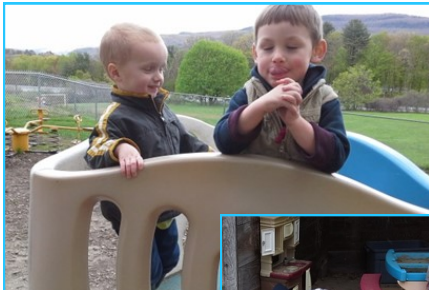


Elm Room (Young Toddlers) The highlight of the month for the Elm Room was our annual trip to the Retreat Petting Farm. With all the interest in Brattleboro's Strolling of the Heifers events, we had been talking about farm animals (animal names, sounds and features), but it was something else to see them in their own big barn on a gorgeous day in June. We so appreciate the parents who took time to join us and to also share a hike and a picnic on the grounds of the farm. For classroom curriculum we expanded the farm theme with a table of farm toys and tractors, farm blocks, farm animal puzzles, dried corn in the sensory table for use for pretend pig food, and a cardboard box barn that we made and decorated ourselves to house our big plastic horse. In other news, Rue and Jade have adjusted well to their transition into the Elm Room, and we soon will be happy to welcome Luna's little sister Holly.



Maple Room (Older Toddlers) Our Maples have been growing all year long and in so many ways. One notable difference in our Maples is that they are mostly interested in playing with friends and are using their imaginations to create all kinds of fun play. They no longer want their teachers constantly near, if anything, they want us to “Go away!” They do need us to help them solve conflicts and encourage sharing but for the most part, they are having so much fun playing together we just watch and smile at their kindness and creativity.

Thank you to Vermont State Police Officer, Max Trenosky, and his K-9 partner, Burke, for coming to Winston Prouty. Max shared that Burke is trained to find things, and recently helped find a young woman who was lost in the woods. He also shared some of the really amazing things he can do, like run really fast and catch a frisbee. He also really loves hotdogs.

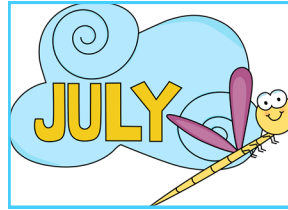
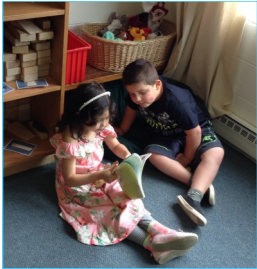


Oak Room (Preschool)

Best wishes to our graduates: Oliver, Jaxson, Matthew, Deshawn, Violet, Ayaan and Evelyn!



Birch Room (Preschool) The children have been busy this month. They have been building with blocks and lots of props that extend their imaginative play, which has included being cats and celebrating birthdays. They have enjoyed a variety of sensory experiences; water, rice and beans, cornstarch goop and soil. A study of insects has begun that will lead into camping and later in the summer oceans and beaches. The children have also been practicing working on group plans, which involves deciding together on what to play or build and all contributing to that play. We have welcomed our newest child class member, Luna, from the Maple Room. All the children are helping her learn our schedule and routines. As the month ends, we will celebrate our graduates: Zane, Indigo, Perry, Christian, Haydan, Jazmin, Anthony and Owen. Congratulations! We officially welcome Jamie Champney, our new Birch Room Lead Teacher, on July 3.



Sun	Mon	Tue	Wed	Thu	Fri	Sat
						1
2 William K is 3! Happy Bday Sally	3 ELC Summer Program Starts	4 CENTER CLOSED for July 4th Holiday	5 Oliver is 4!	6	7	8
9	10	11	12	13	14 Issac M is 3!	15
16 Azriel is 3!	17	18	19	20	21	22 Andrew H is 1!
23 Adrian is 3!	24	25	26	27 Skye is 2!	28	29
30	31					

Upcoming Events:

August 17th ELC Family Summer BBQ
 August 18th Summer Program Year Ends
 August 21-23rd ELC Closed for Staff In-Service and Prep
 August 24-25th CENTER Closed for All-Staff In-Service
 August 28th 2017-2018 Program Year Begins