

The Prouty Voice

February 2017

Volume 11, Issue 6

Note from Chloe Learey, Executive Director



Our Mission

The Winston Prouty Center for Child and Family Development provides inclusive education and family support to promote the success of children and families.

Inside this issue:

Note from Chloe	1
Office News	2
Community Page	3
CBS News	4-5
ELC News	6-7
Calendar	8

**209 Austine Drive
Vermont Hall
Brattleboro, VT 05301**

Phone:
(802) 257-7852

Fax:
(802) 258-2413

Website:
www.winstonprouty.org



FAMILY MATTERS: Resources for Infant Educators

We opened an infant room at Winston Prouty last summer knowing there was a critical need for infant care in our community. While we did not have a specific approach in mind in the planning phase, we were incredibly fortunate to get Nancy McMahon as the lead teacher for that room. Nancy brought with her a commitment to developing the program using the Educaring approach, also known as R.I.E. (Resources for Infant Educators). This model was created by Madga Gerber after she worked with Dr. Emmi Pikler, a pediatrician in Budapest, Hungary. Gerber is the author of "Dear Parent and Your Self Confident Baby (with Allison Johnson)".

Fundamentally this approach is based on respecting and trusting infants as human beings born with strengths and skills, including the ability to actively engage in and create their environment with caregivers. The goal is to help children be "authentic," that is to feel secure, autonomous, competent and connected. One of the strengths of this approach is that it offers principles from which to ground our work, not prescriptions for what to do. Every child is unique and thus may need something different to feel secure or to feel connected. These principles also align well with our Touchpoints approach and include the following:

- Trust in the infant's competence: We have basic trust in the infant to be an initiator, to be an explorer eager to learn what he is ready for. Because of this trust, we provide the infant with only enough help necessary to allow the child to enjoy mastery of her own actions.
- Sensitive observation: Our method, guided by respect for the infant's competence, is observation. We observe carefully to understand the infant's communications and his needs. The more we observe, the more we understand and appreciate the enormous amount and speed of learning that happens during the first two or three years of life. We become more humble, we teach less, and we provide an environment for learning instead.
- Caregiving times - involving the child: During care activities (diapering, feeding, bathing, dressing, etc.), we encourage even the tiniest infant to become an active participant rather than a passive recipient of the activities. Parents create opportunities for interaction, cooperation, intimacy and mutual enjoyment by being wholeheartedly with the infant during the time they spend together anyway. "Refueled" by such unhurried, pleasurable caring experiences, infants are ready to explore their environment with only minimal intervention by adults.
- A safe, challenging, predictable environment: Our role is to create an environment in which the child can best do all the things that the child would do naturally. The more predictable an environment is, the easier it is for babies to learn. As infants become more mobile, they need safe, appropriate space in which to move. Their natural, inborn desire to move should not be handicapped by the environment.
- Time for uninterrupted play and freedom to explore: We give the infant plenty of time for uninterrupted play. Instead of trying to teach babies new skills, we appreciate and admire what babies are actually doing.
- Consistency: We establish clearly defined limits and communicate our expectations to develop discipline.

Sometimes it can be challenging to apply these principles to the little people who are so dependent on others to survive in the world, whether it is seeing their competences or involving them in their own care. It requires a tremendous amount of patience and intention, and a commitment to continuing to learn and grow ourselves as caregivers. The results are worth it, though, creating an environment that helps children develop optimally during a time where their learning and brain development is exponential. Helping children be confident and competent in who they are and in the world around them, is one of the strongest building blocks we can give them in early childhood learning and development. It is the foundation of their future success.

Administration

802-257-7852

Chloe Learey	Executive Director	Ext. 301	chloe@winstonprouty.org
Lisa Whitney	Director of Operations	Ext. 302	lisa@winstonprouty.org
Bridget Goodell	Operations Assistant	Ext. 304	bridget@winstonprouty.org
Paula Schwartz	Development Assistant		paula@winstonprouty.org
Mike Curtis	Assistant		

Wish List

- *Baby Bath Tubs
- *Highchair or Booster Seat w/Tray
- *Gently Used Infant/Toddler Shoes
- *Baby Carriers/Slings
- *Infant Swings
- *Bassinets
- *Boppy Pillows
- *Booster Seats
- *Doll House
- *Baby Mirrors
- *Baby Beds (for toy dolls)
- *Rhino Balls

Important Number to Note!

Please note that if you need immediate assistance after the office is closed, and the classroom isn't answering their phone, please call the ELC cell phone at **802-246-7852**. This rings to a cell phone that the ELC Staff brings with them onto the playground in the afternoons.

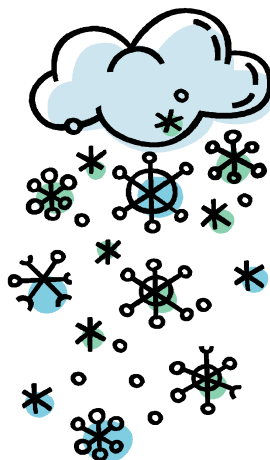
IN CASE OF INCLEMENT WEATHER:

Tune in to

WTSA (96.7 FM, 1450 AM, online at www.wtsa.net) or

WKTV (92.7 FM, 1490 AM, online at www.wkvt.com)

for Center closings or delays.



The Center does NOT follow the closing of the public school system. In general, due to the nature of our work for both the Early Learning Center and Community Based Services, we try to stay open as much as possible.

We expect that days the Center is open when the weather is not ideal may look a bit different from a typical day depending on which children and staff make it to the Center and at what time.

Decisions are typically made by 6:30 a.m. if the Center will be CLOSED.

Board of Trustees

David Dunn (President)
Sue Dyer (Vice President)
Jon Neurock (Treasurer)
Sarah Nohl (Secretary)

Rachel Henry
Frederic Noyes
Thea Lloyd
Scott Lyford
Ann Allbee

Management Team

Chloe Learey, Executive Director
Lisa Whitney, Director of Operations
Alison Wheeler, CIS Coordinator
Mary Coogan, Early Interventionist
Kim Paquette, ELC Program Coordinator

Community Page

If you know of an event that may be of interest to the Prouty community, please email paula@winstonprouty.org with details. Thanks!

Campus Update



We recently were awarded a \$22,000 Building Communities Grant from the VT Regional Economic Development program. The purpose of the grant, which is administered by the VT Department of Buildings and General Services, is to support our expansion and relocation. Successful Building Community Grant projects involve capital costs associated with major maintenance, renovations or planning related to the development of facilities expected to create job opportunities in Vermont communities.

Please join the Winston Prouty Center for

PAR FOR THE CAUSE

Third Annual Mini-Golf Classic

Saturday, March 4, 2017 | 6-9 pm

Kids can golf on Sunday, March 5 | 1-4 pm



Brunch for the Soul at duo Restaurant

Saturday, Feb. 4th 10am-1pm



\$12 adults / \$5 children under six

Proceeds support

**Windham Child Care Association's
Farm to Preschool Program**

Sponsored by: Vermont Smoke & Cure, Brave Coffee & Tea and Grafton Village Cheese Company

February 4th: Duo Restaurant is hosting it's monthly "Brunch for Our Soul" fundraising event and February's beneficiary is **Windham Child Care Association!** Enjoy a hearty brunch featuring Brave Coffee & Tea, Vermont Smoke & Cure, and Grafton Village Cheese Company while supporting the Child and Adult Care Food Program (CACFP), which provides nutrition education, resources and support to local early care and education programs.

Community Based Services (CBS) 802-258-2414

Lisa Adams	Developmental Educator	Ext. 224	ladams@winstonprouty.org
Kerri Beebe	Family Support Worker/Housing	Ext. 204	kerri@winstonprouty.org
Crystal Blamy	Family Supportive Housing	Ext. 201	crystal@winstonprouty.org
Emily Clever	Housing Resource Coordinator	Ext. 203	emily@winstonprouty.org
Mary Coogan	Early Interventionist	Ext. 209	mary@winstonprouty.org
Willie Gussin	Family Support Worker	Ext. 303	willie@winstonprouty.org
Kathy Hallock	Developmental Educator	Ext. 219	kathy@winstonprouty.org
Rebecca Krause	Maternal Child Health Nurse	Ext. 211	rebecca@winstonprouty.org
Brandy Levesque	Consultation & Education, ECFMH	Ext. 228	brandy@winstonprouty.org
Shawn Lund	Consultation & Education, ECFMH	Ext. 216	shawn@winstonprouty.org
Kellyn McCullough	Family Support Worker	Ext. 305	kellyn@winstonprouty.org
Ellen Ostrander	Early Interventionist	Ext. 227	ellen@winstonprouty.org
Sally Pennington	Maternal Child Health Nurse	Ext. 206	sally@winstonprouty.org
Megan Seidner	Early Interventionist	Ext. 226	
Joanne Shaw	Community Resource Parent	Ext. 208	joanne@winstonprouty.org
Alison Wheeler	CIS Coordinator	Ext. 213	alison@winstonprouty.org
Maura Shader & Jennifer Emerson CIS Early Childhood Family Mental Health (ECFMH) Ext. 202			

News from Community Based Services

Community Based Services includes; Children's Integrated Services (CIS), Family Supportive Housing (FSH), and the Early Education Initiative (EEI). CIS is a resource for families when they have questions or concerns about their child's development during pregnancy, infancy and early childhood.

Free 6-Week Parenting Education Series


Sponsored by WSESU, Southeast Vermont Building Bright Futures and Winston Prouty Center for Child and Family Development.

Positive Solutions for Families is a free parenting class that meets for six weeks and teaches parents strategies to build positive social, emotional and behavioral skills in their young children. It's most relevant for parents with 3 to 6 year olds.


6 Mondays: February 27, March 6, 13, 20, 27 and April 3

5 to 7 pm at The Winston Prouty Center

FREE 6-Week Parenting Education Series
Sponsored by Southeast VT Building Bright Futures, The Winston Prouty Center, and Windham Southeast Supervisory Union



Starting Monday, February 27 2017
5:00-7:00 at the Winston Prouty Center



Positive Solutions for Families
Positive Solutions for Families provides information for families on how to promote children's social and emotional skills, and use positive approaches to help children learn appropriate behavior. The six sessions are designed to give you new strategies to handle daily routines, cope with challenging behavior, and help your child learn to solve simple social problems. You will learn to create and nurture success in your child, to avoid being drawn into energizing negativity, and how to have clear rules and clear and consistent consequences.
The program is designed for families with children ages 3 to 6.

Presented by:
Brandy Levesque, Winston Prouty Center Consultation and Education
Janice Stockman, WSESU Early Childhood Coordinator

Child care and dinner provided FREE!

6 Mondays: February 27, March 6, 13, 20, 27 and April 3, 2017
5:00 - 7:00 PM
at
Winston Prouty Center, 209 Austine Drive, Brattleboro
Call Janice at 802-254-3755 to register

CBS Wish List

One of our Community Based Services families is searching for two more cribs and mattresses (not older than 10 years old and slats no more than 2 3/8 inches between crib slats so that a baby's body cannot fit through the slats. If a soda can fits easily through the slats on the crib, the spaces between the slats are too wide.).

Please contact Kerri at 257-2101 ext. 204 if you can help this family out.
Thank you so much!



News from The Early Learning Center

ELC Sledding & Pizza Party

February 10th (Rain Date: February 17th)
Friday Night 4:00-6:00 pm

Pizza and Hot Chocolate Provided! (Pizza delivered at 5:00)

Sledding starts at 4:00!

Please bring a sled if you can and some to share.

Please use the Lower Parking Lot as we are sledding on the lower soccer field next to the playground.



Bring the Family! Please sign up in your classroom!

Resources

State-wide community resources	Vermont 2-1-1	2-1-1	www.vermont211.org
Child care referrals and resources	Windham Child Care Association (WCCA)	802-254-5332	www.windhamchildcare.org
WIC	Vermont Department of Health	802-257-2880	www.healthvermont.gov
Mental health and substance abuse services	Health Care and Rehabilitation Services (HCRS)	1-888-888-5144	www.hcrs.org
Housing and other services for people in poverty	Southeastern Vermont Community Action (SEVCA)	802-254-2795	www.sevca.org
New Moms Network (Dawn Kersula, MA, RN)	Brattleboro Memorial Hospital	802-257-8278	E-mail: dkersula@bmhvt.org www.bmhvt.org
Local event listings and information	Parent Express	603-352-1234	www.sentinelsource.com/parent_express/

Early Learning Center

802-257-2101

ELC Program Coordinator

Kimberley Paquette

Ext. 306 kim@winstonprouty.org

ELC Administrative Coordinator

Angela Hoag

Ext. 210 angela@winstonprouty.org

Teaching Staff

Acorn: Nancy McMahon, Michelle Goodwin, Mandi Martin

Ext. 218 nancy@winstonprouty.org

Elm: Susan Heimer, Allie Barrett

Ext. 207 susan@winstonprouty.org

Maple: Amy Fulton, Mindy Brennan

Ext. 205 amy@winstonprouty.org

Oak: Sarah Bemis, Lorraine Gilman

Ext. 217 sarah@winstonprouty.org

Birch: Kim Jacques, Alfred Hughes Jr.

Ext. 220

Floaters: Kathy Wright, Mare Lunderville, Lyn Call, Alyssa Kelly

Non-Teaching Staff

Liz Martin

Paul Rossi

Volunteers

Susan Mandell

Bob Peeples

Spread the Word: We're still looking to hire more Teachers: Lead Teacher - Pre-School, Long-term Sub - Preschool, Assistant Teachers, and Substitutes.

Acorn Room (Infants) from Nancy: One of my favorite times of our day in the Acorn room is our circle time. I knew the importance of singing to children going back to my own childhood. My earliest and fondest memories of my grandmother singing with me and my siblings; I learned all the songs she sang to my dad when he was young. My Dad also taught us songs in the car on road trips. He taught us not only harmony but songs from the 20s and 30s that he grew up singing with his family.

So singing for me is a comfort, pleasant, fun and stimulating. This is what I hope to bring into the classroom. Singing with young children is good for the brain! It encourages early language, socialization, and awakens and stimulates the brain's different parts. It's a great way to introduce new ideas or curriculum like colors, numbers, names or words. This year has been a real treat as I went into the year with no expectations on how music or circle time would go with infants. I just started very informally at first. It has become one of our favorite parts of the day. We use simple shakers, rattles and bells to use along with songs, finger rhymes and simple movement. Studies have found that babies who engage in making music (with simple instruments like shakers) and moving to music, use more communicative gestures and are more likely to use pretend play early around 12 months, compared with children who listen to music passively. The babies come right over as I pull out our basket of instruments, they enjoy picking out their instruments, shaking and experimenting with the different sounds. We sing some seasonal songs; right now we are singing songs about snow and sleeping bears. In February we will sing different songs, for Valentines Day. Michelle has introduced us all to the sound of the ukulele. It's been amazing to watch them participate, do the motions, sing some words, make sounds with their instrument and be together as a group!



Elm Room (Young Toddlers)



Blue is our color of the month. We are having so much fun learning about a color that has so many shades by doing our own color blending.

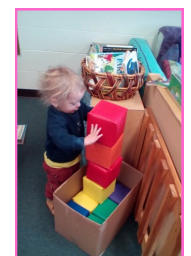


We have loved having the light table in our room, with a big assortment of square and triangle shaped colored lenses magnet blocks. These are great for color identification and color blending as we stack different ones together. We are also fascinated by the reaction of the magnets.

At least once a month, we do a baking project. We love mashing, smelling and especially tasting our creations! They also provide sensory and social experiences for the children and fine motor practice with pouring, stirring and dumping.

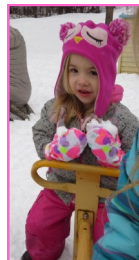


These are just some of our puffy blocks, that provide plenty of opportunities for various kinds of physical coordination.



Maple Room (Older Toddlers) Outside Play!

January Review. We are having so much fun playing in the snow this year! Thank you for sending in warm mittens and making sure your child has all the outside clothing they need. We try to get outside every day, and we have been great about doing just that. We never know what the weather will do to our playground so it is an adventure every day. Did you know that the most fun we've had outside is sliding on our bottoms? The snow has to be just right for this to work and lately we've had so much fun zipping down the hill and crawling back up. We also love making snow people and snow angels - we even made a real "snowy" owl! Oh, I almost forgot, we also love eating the snow. We melted some ice and discovered there was a lot of sand in that ice. Yuck!



Oak Room (Preschool) The month of January has been crawling with animals in the oak classroom. We read multiple versions of the classic story "The Mitten," along with many other stories featuring our favorite winter animals. We used these animals as a basis for play in all areas of our classroom. Our dramatic play center featured a bear cave fit for all our sleepy bear friends. We practiced retelling the mitten story using both drawings and puppets. We have been practicing our matching skills with a mitten matching game and we have been using bear counters to learn color and size sorting, patterns and weight. We have also been busy in our art center working to explore using a variety of different art mediums, including paint, glue, scissors, stamps and more!

A special treat this month was our teddy bear tea party. We baked muffins and brewed fruit tea to share with our friends. The month of February we look forward to learning all about fairy tales.



Birch Room (Preschool) Happy New Year – Gung Hay Fat Choy!

In dramatic play we are exploring different cultures, including the Chinese New Year – Year of the Firey Rooster! The children learned a dragon dance with scarves and made red envelopes, money and paper lanterns. We learned Chinese words for good luck, happiness and helping hands. We also tried using chopsticks and ate Chinese food and fried dough treats. Sienna's parents came in and read a story called "Cat and Rat, The Legend of the Chinese Zodiac," by Ed Yang.

January is water, ice and snow month. We are so lucky to live in New England in the winter. There are so many opportunities for snow play and exploration. It's been fun making snow angels, climbing up the hill, over the snow banks and through the woods searching for animal tracks in the snow. PJ Day was a big success. We stayed in them all day and played games, listened to music and had hot cocoa and special treats. In our small group centers, we're learning how to engage in imaginary play with peers, express our emotions, and utilize our fine motor skills at the art area and sensory table.



February Happenings

Nat'l Black History Month

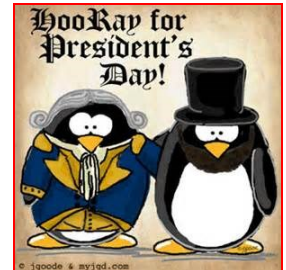
Nat'l Library Lovers Month

Feb. 2nd Nat'l Groundhog Day

Feb. 14th Valentines Day

Feb. 20th Presidents Day

Feb. 27th Nat'l Polar Bear Day



The **Center closes** at **3:30** on the first Wednesday of each month for Staff Meeting.



Sun	Mon	Tue	Wed	Thu	Fri	Sat
			1 CENTER CLOSED at 3:30 for All Staff Meeting	2	3 Happy Bday Ellen Verity is 3!	4
5	6 Oliver is 3!	7	8	9	10 Tui is 1!	11 Happy Bday Kerri
12	13 Nova is 3!	14	15 Steven is 6!	16 Desmond is 2!	17 Happy Bday Lisa W Nick is 2!	18
19	20 CENTER CLOSED for Presidents' Day	21	22 Boden is 3! Happy Bday Joanne	23	24 Happy Bday Paula	25 Autumnrose is 1!
26	27 Liam is 3!	28	Leap Year Kids: Indigo is 5! Jazmin is 5!			

Upcoming
Events:

March 1st Center Closes at 3:30 for All Staff Meeting
March 24th ELC Closes at 12:00 for Parent Conferences
March 27th ELC Closed for Parent Conferences