

The Prouty Voice

March 2016

Volume 10, Issue 7



Our Mission

The Winston Prouty Center for Child Development provides inclusive education and family support to promote the success of children and families.

Inside this issue:

Note from Chloe	1
Office News	2
Board News	2
Community Page	3
CBS News	4-5
ELC News	6-7
Calendar	8

20 Winston Prouty Way
Brattleboro, VT 05301

Phone:
(802) 257-7852

Power Failure Line:
(802) 257-4147

Fax:
(802) 258-2413

Website:
www.winstonprouty.org



Note from Chloe Learey, Executive Director

Family Matters: Early Childhood Special Education

Janice Stockman, Early Childhood Coordinator for Windham Southeast Supervisory Union, joined me to talk about early childhood special education, also known as EEE or "Triple E," on the Episode 7 of "Family Matters," the BCTV talk show where we discuss topics of interest to families with young children. EEE stands for Essential Early Education, and is the part of special education that serves 3- to 5-year-old children who have been diagnosed with a developmental delay in one or more fundamental skill areas, or who have been diagnosed with a medical condition that may interfere with learning and future success at home, in school and in the community. EEE uses developmental screening and evaluation to determine eligibility for services.

Information from families and other providers who may have worked with the child if they participated in Children's Integrated Services Early Intervention (services for children birth to age 3 who have or may be at risk for developing a delay) may be used in this evaluation. If a child is found eligible for services, an Individual Education Program (IEP) is developed with educational goals and how those goals will be met in the educational environment. Other related services are also identified in the IEP. These services may include speech and language therapy, occupational therapy and/or physical therapy. All services are provided in the community with children and teachers.

It is important to know that the goal is for children to be in an inclusive environment; having the supports they need to successfully participate in an environment where all children can be found. Services and supports happen through a variety of means, from helping a classroom use universal design, to implementing best practice with Multi-tiered Systems of Support (MTSS), to incorporating specialized instruction and identifying accommodations. Services are individualized and take into account the strengths and interests of the child, the context of the family, and a team determining what strategies will work best to support their development and achieve their goals. This team approach is essential for understanding the child in a holistic way, and thus improving their chance of success.

Special Education can be a daunting system for families to navigate, and there are resources available to help sort through the challenges. First and foremost, the staff at EEE is available to answer questions and help outline the process. If a child is participating in CIS Early Intervention and might be eligible for services after they turn three, the EI providers will help navigate the transition to EEE. Another excellent resource for information is Vermont Family Network (vermontfamilynetwork.org), which is the designated parent information center for our state. While its direct services do not extend to our region its web-based resources are accessible and informative. In addition, families often turn to each other for information and support. There are a variety of things that come up for families who have a child with a developmental delay or medical condition, including that this is not what families planned when they decided to have a child. For all parents there are many joys along the path of discovering who your child is, as well as challenges. It is important for families to know that there are resources available to help figure things out. It is also important for families to understand that they know their child and are the best source of information about their child's strengths, abilities and challenges.

Administration

802-257-7852

Chloe Learey Executive Director Ext. 11 chloe@winstonprouty.org
 Lisa Whitney Director of Operations Ext. 12 lisa@winstonprouty.org
 Paula Schwartz Development Assistant Ext. 41 paula@winstonprouty.org
 Susan Fiske-Gagne Bookkeeper
 Miles Shaw Assistant



Wish List

- *Baby Carriers/Slings
- *Infant Swings
- *Bassinets
- *Boppy Pillows
- *Booster Seats
- *(not new) Towels!
- *Baby Mirrors
- *Baby Beds (for toy dolls)
- *Rhino Balls



Some Important Phone Numbers

Please make a note of them!

To reach the ELC after 4:30 pm, call 257-2101 ext. 23

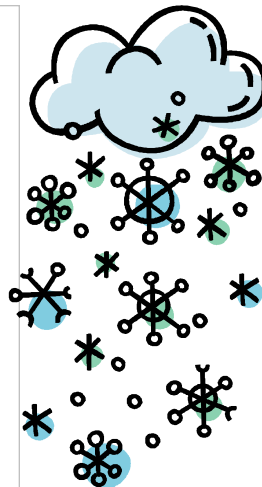
IN CASE OF INCLEMENT WEATHER:

Tune in to

WTSA (96.7 FM, 1450 AM, online at www.wtsa.net) or

WKVT (92.7 FM, 1490 AM, online at www.wkvt.com)

for Center closings or delays.



The Center does NOT follow the closing of the public school system. In general, due to the nature of our work for both the Early Learning Center and Community Based Services, we try to stay open as much as possible.

We expect that days the Center is open when the weather is not ideal may look a bit different from a typical day depending on which children and staff make it to the Center and at what time.

Decisions are typically made by 6:30 a.m. if the Center will be CLOSED.

Board of Trustees

David Dunn (President)
 Sue Dyer (Vice President)
 Jon Neurock (Treasurer)
 Sarah Nohl (Secretary)

Heather Golding
 Rachel Henry
 Frederic Noyes
 Thea Lloyd

Management Team


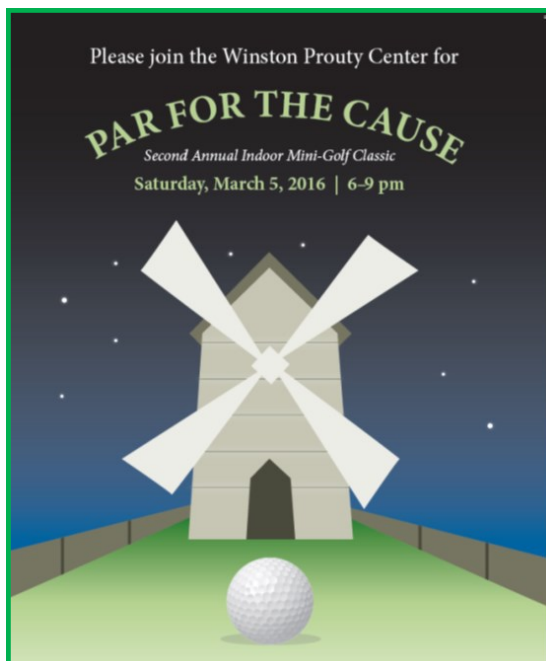
Chloe Learey, Executive Director
 Lisa Whitney, Director of Operations
 Alison Wheeler, CIS Coordinator
 Mary Coogan, Early Interventionist
 Sara Lovell-Allbee, Education Supervisor

Community Page

If you know of an event that may be of interest to the Prouty community, please email paula@winstonprouty.org with details. Thanks!

Campus Update

- The weekend of March 5th and 6th we will host "Par for the Cause," the 2nd Annual Indoor Mini-golf classic, on the new campus! The adult-event on Saturday, March 5th from 6:00 to 9:00 p.m. includes light dinner fare and a cash bar for \$25 per person. Kids can play on Sunday, March 6th from 1:30 to 4:30 p.m. for \$5 per round. Come enjoy the fun, and support our renovations!
- We continue to show space on the campus to organizations that are potentially interested in space to rent or purchase. Right now there is space available in Holton Hall (the main administration building), Vermont Hall (the building that faces the highway) and the two dormitories. There are two houses on the campus, Wheeler House and the President's House, and both are available for purchase.
- The plan continues to be for other mission-driven organizations to be able to buy into the campus in a planned community development model (similar to a condominium association). The two houses may or may not be part of the campus going forward. The structure of the model will likely be that each building will be for sale, and that the owner may lease/rent space to other entities that are compatible with the other tenants on campus.
- We are beginning to go through the contents of the first floor of Vermont Hall where the operations of Winston Prouty will be housed on the new campus. We need to clear the floor so renovations can begin. We still hope to be able to move into the new location in June.



Save the Date

Winston Prouty Early Learning Center

Family Potluck Dinner

@ the VFW on Black Mountain Road in Brattleboro

Thursday, April 7th ~ 5:30-7:30pm

"The adults can talk and the children can play, we all have to eat dinner anyway!"

Community Based Services (CBS) 802-258-2874

Lisa Adams	Developmental Educator	Ext. 24	ladams@winstonprouty.org
Kerri Beebe	Family Support Worker/Housing	Ext. 26	kerri@winstonprouty.org
Crystal Blamy	Family Supportive Housing	Ext. 13	crystal@winstonprouty.org
Emily Clever	Family Supportive Housing	Ext. 25	emily@winstonprouty.org
Mary Coogan	Early Interventionist	Ext. 15	mary@winstonprouty.org
Terrill Douglas	Maternal Child Health Nurse	Ext. 28	terril@winstonprouty.org
Willie Gussin	Family Support Worker	Ext. 26	willie@winstonprouty.org
Kathy Hallock	Developmental Educator	Ext. 16	kathy@winstonprouty.org
Brandy Levesque	Inclusion Facilitator	Ext. 31	brandy@winstonprouty.org
Kellyn McCullough	Family Support Worker	Ext. 21	kellyn@winstonprouty.org
Sally Pennington	Maternal Child Health Nurse	Ext. 28	sally@winstonprouty.org
Megan Seidner	Early Interventionist	Ext. 24	
Joanne Shaw	Community Resource Parent	Ext. 14	joanne@winstonprouty.org
Shelly Torunski	Developmental Educator	Ext. 30	shelly@winstonprouty.org
Alison Wheeler	CIS Coordinator	Ext. 29	alison@winstonprouty.org

News from Community Based Services

Community Based Services includes; Children's Integrated Services (CIS), Family Supportive Housing (FSH), and the Early Education Initiative (EEI). CIS is a resource for families when they have questions or concerns about their child's development during pregnancy,

Emily now has 9 families enrolled in the Housing Coordination Program: 5 have been successfully housed, 1 was offered an apartment last week, and 3 are in the process of housing search. Also Groundworks was awarded a grant in February to provide short-term transitional housing for homeless families with children in the Brattleboro area. This funding is intended to support 3 2-bedroom units for 5 months to expand crisis bed/room capacity for homeless families in the area. Emily is supporting this grant through the Housing Coordination Program. She and Josh Davis (Director at Groundworks) met with one landlord last week to sign a lease for an apartment for master leasing in this program. We anticipate another local landlord working with us to use one of his apartments for master leasing in this program as well.

Alison and Kerri will be attending a Parents as Teachers (PAT) training from April 4-8th in Fairlee Vermont. This is an evidence based home visiting model for CIS Family Support.

Early Intervention is in the process of working on their parent satisfaction surveys. They received a list of 60 families who will receive the surveys. Families will receive a postcard from the state and EI staff will hand deliver the surveys to families.

CIS Wish List

One of the families in the our community recently lost their home and many of their personal belongings to a fire. They are in need of a whole host of household items, including diapers, wipes, non-perishable food and a printer (regular home printer to connect to a laptop). Prouty is working with other local organizations to help support this family. Please contact Kellyn McCullough at Ext. 21 for the current list of needed items.

Their hope is to be able to build a home on their land in Putney or purchase another trailer. They didn't have homeowners insurance, so a fund has been set up for the community to make donations to help this family. Checks can be made out to the Savings Bank of Walpole for the Shane P. Goldsmith Benefit Fund. Checks can either be mailed to the bank at: 68 Ames Plaza, PO Box 517, Walpole NH 03608, or dropped off at Winston Prouty for Kellyn McCullough, who will deliver them directly to the bank.

The Mother's Circle continues to meet at Prouty on Tuesdays from 10:45-12:00pm. Any mother with a child 12 months or younger is welcome to come to any meeting. Childcare and snacks are provided. If childcare is needed, please have the mother call or text Alison Wheeler at 413-522-9451 with 24-hours notice.

Resources

State-wide community resources	Vermont 2-1-1	2-1-1	www.vermont211.org
Child care referrals and resources	Windham Child Care Association (WCCA)	802-254-5332	www.windhamchildcare.org
WIC	Vermont Department of Health	802-257-2880	www.healthvermont.gov
Mental health and substance abuse services	Health Care and Rehabilitation Services (HCRS)	1-888-888-5144	www.hcrs.org
Housing and other services for people in poverty	Southeastern Vermont Community Action (SEVCA)	802-254-2795	www.sevca.org
New Moms Network (Dawn Kersula, MA, RN)	Brattleboro Memorial Hospital	802-257-8278	E-mail: dkersula@bmhvt.org www.bmhvt.org
Local event listings and information	Parent Express	603-352-1234	www.sentinelsource.com/parent_express/

Early Learning Center

802-257-2101

Education Supervisor

Sara Lovell-Allbee

Ext. 32 sara@winstonprouty.org

ELC Coordinator

Kimberley Paquette

Ext. 32 kim@winstonprouty.org

ELC Program Assistant

Angela Hoag

Ext. 19 angela@winstonprouty.org

(Bridget Goodell will be covering for Angela's maternity leave.)

Teaching Staff

EL1: Susan Heimer, Amy Fulton

Ext. 20 susan@winstonprouty.org

EL2: Brianna McCain, Lyn Call

Ext. 18 brianna@winstonprouty.org

EL3: Michelle Goodwin, Kim Jacques, Alfred Hughes Jr.

Ext. 22 michelle@winstonprouty.org

EL4: Ana Williams, Maggie Sullivan, Kristine Arnold

Ext. 17 ana@winstonprouty.org

Floater: Kathy Wright, Mandi Martin, Mare Lundy, Lorraine Gilman

Baby News: Scarlet Anne Hoag was born February 4th. She weighed in at 8 lb., 4 oz. and was 19.5 inches long. Mama Angela and baby are doing great!

Non-Teaching Staff

Liz Martin
Paul Rossi

Volunteers

Susan Mandell
Bob Peeples
Debbi Reed-Savory

Celebrate the Joy of Reading

March is National Reading Month and March 2nd is the birthday of the beloved Dr. Seuss. Even young children can join in the celebration of this month!

Reading aloud to your child is one of the most important things you can with them. Reading aloud can easily become part of your daily routine, before bedtime or naptime or after mealtime. Make it fun! Don't forget funny voices, sound effects, acting out parts of the story and asking lots of questions. A very young child can look at pictures, practice turning the pages and hear you talk about the story. A child is never too young to learn that books are fun, engaging and something that your family values. And it is yet another way to bond with your child - even a baby can cuddle on your lap, look at a book and hear your voice. The long-term benefits cannot be overstated. Reading is a fundamental building block to success in school, which translates to success in life. So pick up a book and get them started.

What Young Children Like In Books:

Infants 0-6 Months

- Books with simple, large pictures or designs with bright colors.
- Stiff cardboard, "chunky" books or fold out books that can be propped up in the crib.
- Cloth or soft vinyl books with simple pictures of people or familiar objects that can go in the bath or get washed.

Infants 6-12 Months

- Board books with photos of other babies and brightly colored “chunky” board books to touch and taste!
- Books with photos of familiar objects like balls and bottles.
- Books with sturdy pages that can be propped up or spread out in the crib or on a blanket.
- Plastic or vinyl books for bath time or washable cloth books to cuddle and mouth.
- Small plastic photo albums of family and friends.

Young Toddlers 12-24 Months

- Sturdy board books that they can carry.
- Books with photos of children doing familiar things like playing or sleeping.
- Goodnight books for bed time.
- Books with only a few words on each page.
- Books with simple rhymes or predictable text.
- Animal books of all sizes and shapes.

Toddlers 2-3 Years

- Books that tell simple stories.
- Simple rhyming books that they can memorize.
- Bed time books.
- Books about counting, the alphabet, shapes or sizes.
- Animal books, vehicle books, books about playtime.
- Books with their favorite TV characters inside.
- Books about saying hello and good-bye.

*The more that you read,
the more things you will know.*

*The more that you learn,
the more places you'll go.*

Dr. Seuss



March Happenings

Music in our Schools Month

National Nutrition Month

National Professional Social Work Month

Women's History Month

March 2: National Reading Day (Dr. Seuss Day)

March 13: Daylight Savings Time Begins

March 17: St. Patrick's Day

March 20: Spring Equinox



The **Center closes** at **3:30** on the first Wednesday of each month for Staff Meeting.

Sun	Mon	Tue	Wed	Thu	Fri	Sat
		1 George is 2!	2 CENTER CLOSED at 3:30 for All Staff Meeting	3	4	5
6	7	8 Judah is 2!	9 Happy Bday Paul!	10	11 Happy Bday Amy! Kyra is 2!	12
13	14 Happy Bday Michelle!	15	16	17	18	19
20 Happy Bday Alfred!	21	22 Happy Bday Angela!	23	24 Anastasia is 5!	25 ELC Closes @ 12:00 for Parent Conferences	26
27	28 ELC Closed for Parent Conferences	29	30	31 DeShawn is 4!		

**Upcoming
Events:**

April 6th: CENTER CLOSSES at 3:30 for ALL Staff Meeting

April 18th - 22nd: ELC CLOSED for Spring Break