

The Prouty Voice

Volume 9, Issue 6

February 2015



20 Winston Prouty Way
Brattleboro, VT 05301

Phone:

(802) 257-7852

Power Failure Line:

(802) 257-4147

Fax:

(802) 258-2413

Website:

www.winstonprouty.org

Our Mission

The Winston Prouty Center for Child Development provides inclusive education and family support to promote the success of children and families.

Inside this issue:

Note from Chloe	1
Office News	2
Board News	2
Community Page	3
CBS News	4-5
ELC News	6-7
Calendar	8

Note from Chloe Learey, Executive Director

The Red "P" in the Window

We have been talking for almost 2 years about renovating and expanding the building, and the time to act is finally here.

You may recall that we completed a Strategic Plan in 2013 which resulted in the following goals and strategies:

The Winston Prouty Center of tomorrow needs to expand to meet the growing need for quality services for young children and their families.

Our goals for the next 5 years are:

- *More families have access to quality early education opportunities
- *More early childhood professionals are inclusive and practice best teaching methods
- *More families are competent and confident and able to advocate for their child's optimal development
- *More families with children with special needs are able to participate in the community.

Our strategies for accomplishing these goals include:

- *Add 2 classrooms to the Early Learning Center to increase services for infants and toddlers.
- *Enlarge preschool classrooms to improve programming and increase enrollment.
*Upgrade indoor play space.
- *Create space for family support and education.
- *Expand meeting and office space.

Expanding our existing space is critical for the Prouty Center to provide leadership for early childhood education and services for our community.

We hope to break ground in early April although we have a lot to do between now and then, including getting the financing lined up and finding a construction company to build. We will start regular communication soon about what is happening and any anticipated impact there may be on operations. We do not expect to close during construction.

We are beginning a more active phase of our capital campaign. Our goal is to raise at least \$400,000 towards the project which is currently estimated at just over \$2 million. We have raised \$144,000 so far, including a \$30,000 grant from the Thompson Trust and the match, which we need to raise. We have 2 events this spring to raise money, and are also doing smaller events such as house parties as "*friendraisers*" and fundraisers. If you know anyone who might want to host a party or do something else to raise friends and funds, let me know! It would be great to raise more so that we can borrow less.

Back to the red "P" in the window – our review before the Development Review Board is February 18th at 7 p.m. All are welcome to attend, and please feel free to contact me with any questions or concerns. I am happy to give you a 'tour' of the building model we have in the conference room.

Here's to a grand opening in September.....

Administration

802-258-7852

Chloe Learey	Executive Director	Ext. 11	chloe@winstonprouty.org
Lisa Whitney	Director of Operations	Ext. 12	lisa@winstonprouty.org
Angela Hoag	Office Manager	Ext. 10	angela@winstonprouty.org
Miles Shaw	Assistant		

Some Important Phone Numbers

Please make a note of them!

To reach the ELC after 4:30 pm, call 257-2101 ext. 23

To reach us during a power failure, call 257-4147

IN CASE OF INCLEMENT WEATHER:

Tune in to

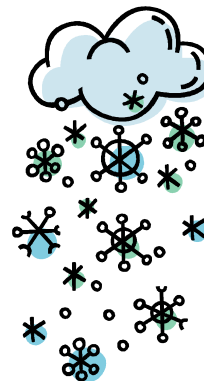
WTSA (96.7 FM, 1450 AM, online at www.wtsa.net) or

WKTV (92.7 FM, 1490 AM, online at www.wkvt.com)

for Center closings or delays.

Decisions are typically made by 6:30am

If the center will be CLOSED.



Wish List

- | | |
|---|-----------------------|
| *Boppy Pillows | *Push toys |
| *Baby mirrors | *Rhino balls |
| *Booster seats | *Highchair |
| *Gallon of neutral wall paint | |
| *1 Piece toddler snow suits | |
| *Kitchen table and chairs (adult size) | |
| *Cause & Effect toys (non battery operated) | |
| *1 Twin Bedframe | *1 Full Size Mattress |

Board of Trustees

David Dunn (President)	Heather Golding
Karen Henry (Vice President)	Rachel Henry
Jon Neurock (Treasurer)	Frederic Noyes
Sarah Nohl (Secretary)	Shawna Parker
Sue Dyer	

Management Team

Chloe Learey, Executive Director
 Lisa Whitney, Director of Operations
 Alison Wheeler, CIS Coordinator
 Mary Coogan, Early Interventionist
 Sara Lovell-Allbee, Education Supervisor

Community Page

If you know of an event that may be of interest to the Prouty community, please email angela@winstonprouty.org with details. Thanks!

Happening in Brattleboro

Domino Toppling Extravaganza

Monday, February 16th @ 5pm

Brattleboro Museum & Art Center

Price: Free for youth 8 and under (adults \$5, \$3 for members)

Contact Name: Amanda

Phone: 802-257-0124

Email: info@brattleboromuseum.org

“An annual spectacle and crowd favorite, the Domino Toppling Extravaganza returns to BMAC for its eighth straight year. Veteran domino toppler and YouTube superstar Lily Hevesh and other domino whiz kids will arrive in Brattleboro 48 hours in advance to begin setting up the big show.

Correctly guess how many dominoes are set up, and you could start the entire chain reaction! “

From the website: www.vermont.com/calendar



Community Based Services (CBS) 802-258-2874

Emily Clever	Family Supportive Housing	Ext. 25	emily@winstonprouty.org
Crystal Blamy	Family Supportive Housing	Ext. 13	crystal@winstonprouty.org
Mary Coogan	Early Interventionist	Ext. 15	mary@winstonprouty.org
Jillsen Deignan	Developmental Educator	Ext. 24	jillsen@winstonprouty.org
Terrill Douglas	Maternal Child Health Nurse	Ext. 28	terril@winstonprouty.org
Kathy Hallock	Developmental Educator	Ext. 16	kathy@winstonprouty.org
Sally Pennington	Maternal Child Health Nurse	Ext. 28	sally@winstonprouty.org
Brandy Levesque	Inclusion Facilitator	Ext. 31	brandy@winstonprouty.org
Joanne Shaw	Community Resource Parent	Ext. 14	joanne@winstonprouty.org
Alison Wheeler	CIS Coordinator	Ext. 29	alison@winstonprouty.org
Kellyn McCullough	Family Support Worker	Ext. 21	kellyn@winstonprouty.org
Shelly Torunski	Developmental Educator	Ext. 30	shelly@winstonprouty.org

Volunteer: Teddi Tucci

News from Community Services:

The Children's Integrated Services program at The Winston Prouty Center is a resource for families when they have questions or concerns about their child's development during pregnancy, infancy and early childhood. CIS was created by the state of Vermont to help ensure the success of children and families through early supports and services. CIS is open to all families.

Some CIS Annual Data Highlights for 2014

CIS Received 545 referrals in 2014

- * 247 new families worked with a CIS provider to establish a One Plan with family driven goals
- * 92% of families who exited CIS in 2014 met one or more goals during their time working with CIS
- * 59% of families who exited CIS services in 2014 did not need any further related supports upon exit

CBS is still recruiting for a full-time Family Support Worker and we have several interviews scheduled on 2/18!

The CIS Coordinator and Community Based Family Support team will be attending the Office of Economic Opportunity's 2nd Annual Poverty & Opportunity Forum for Sharing Ideas and Practices among Community Partners on 3/31/15 at the Lake Morey Inn in Fairlee, VT.

Several CBS staff will be attending a Family Services March conference: Zero To Six—Applying the Developmental Perspective to Achieving Safety for our Most Vulnerable Children. The keynote speaker will be Brenda Jones Harden, PhD, whose focus is on the developmental and mental health needs of young children at environmental risk, specifically children who have been maltreated, are in the foster care system, or exposed to multiple family risks such as maternal depression, parent substance use, and poverty.

Resources

State-wide community resources	Vermont 2-1-1	2-1-1	www.vermont211.org
Child care referrals and resources	Windham Child Care Association	802-254-5332	www.windhamchildcare.org
WIC	Vermont Department of Health	802-257-2880	www.healthvermont.gov
Mental health and substance abuse services	Health Care and Rehabilitation Services (HCRS)	1-888-888-5144	www.hcrs.org
Housing and other services for people in poverty	Southeastern Vermont Community Action (SEVCA)	802-254-2795	www.sevca.org
New Moms Network (Dawn Kersula, MA, RN)	Brattleboro Memorial Hospital	802-257-8278	E-mail: dkersula@bmhvt.org www.bmhvt.org
Local event listings and information	Parent Express	603-352-1234	www.sentinelsource.com/parent-express/

Early Learning Center

Education Supervisor

Sara Lovell-Allbee

Ext. 32 sara@winstonprouty.org

802-257-2101

Teaching Staff

EL1: Susan Heimer, Kelsey Carew

Ext. 20 susan@winstonprouty.org

EL2: Jordan Wyckoff, Maggie Sullivan, Katrina Irish

Ext. 18 jordan@winstonprouty.org

EL3: Ana Williams, Kim Jacques, Alfred Hughes Jr.

Ext. 22 ana@winstonprouty.org

EL4: Ylan Roy, Amy Fulton

Ext. 17 ylan@winstonprouty.org

Floaters: Kathy Wright, Lyn Call and Martha Rath

Non-Teaching Staff

Liz Martin

Paul Rossi

Volunteers

Susan Mandell

Marki Webber

WINTER HEALTH

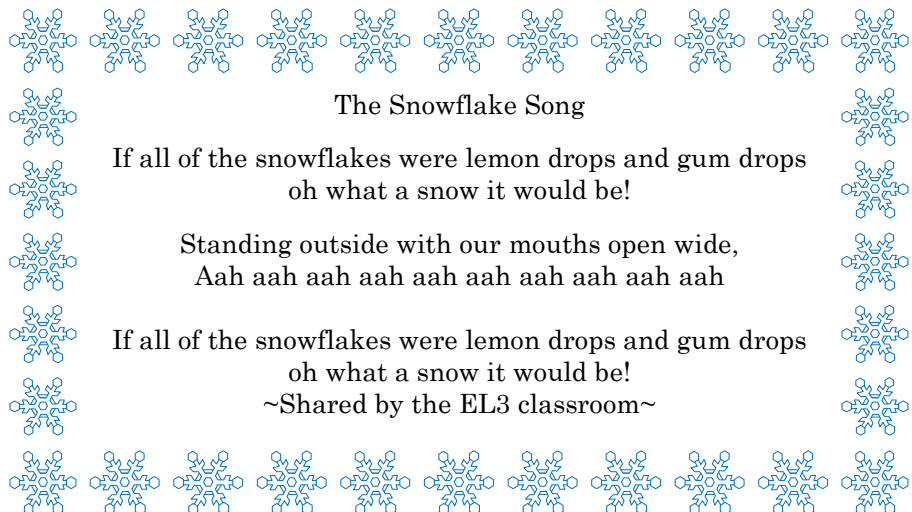
Cold weather does not cause colds or the flu, but the viruses that cause these tend to be more common in the winter when children are in school and are in closer contact with each other. Frequent hand washing and teaching children to cough or sneeze into their elbows may help reduce the risk of colds and the flu.

Children (even infants and toddlers) need fresh air daily as long as they do not get too cold. It is good for their emotional health as well as their physical health. Please spend that extra few minutes to bundle your children up and enjoy winter!

~Kim Jacques, EL3 Teacher



Photo from EL4



The Snowflake Song

If all of the snowflakes were lemon drops and gum drops
oh what a snow it would be!

Standing outside with our mouths open wide,
Aah aah aah aah aah aah aah aah aah

If all of the snowflakes were lemon drops and gum drops
oh what a snow it would be!

~Shared by the EL3 classroom~

Cold temperatures have arrived. Here are some ways to enjoy winter's bounty of snow, ice and cold. There are many opportunities for outside fun!
~Kim Jacques, EL3 Teacher

*Go sledding

*Make snow angels

*Catch snowflakes on black paper

*Color snow art

*Make snow people

*Make snow forts

*Look for animal tracks

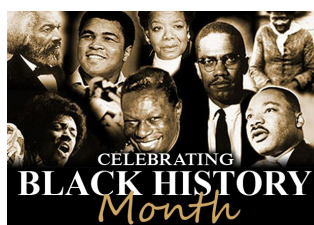


Photo from EL4

What I ♥ about February

The Center closes at 3:30 on the first Wednesday of each month for Staff Meeting.

***Thank you :)**



February Happenings

Black History Month
National Bird-Feeding Month

February 2nd Groundhog Day
February 14th Valentine's Day
February 16th President's Day



Upcoming Events:

March 4: Center Closes at 3:30 for All Staff meeting

March 27: ELC Closes at 12 for Parent Conferences

March 30: ELC CLOSED for Parent Conferences

February 2015

Sun	Mon	Tue	Wed	Thu	Fri	Sat
1 Happy Bday Maggie  Super Bowl Sunday!	2 Anthony is 3!  Groundhog Day!	3	4 Center Closes at 3:30 for All Staff Meeting	5	6	7
8	9	10	11	12	13	14 Happy Valentine's Day! 
15 Steven is 4! Lars is 3!	16 Center CLOSED for President's Day Holiday	17 Happy Bday Lisa	18	19	20	21
22 Happy Bday Joanne	23 Carson is 5!	24	25	26 Athena is 3!	27	28 Logan is 3!