

The Prouty Voice

Volume 9, Issue 5

January 2015



20 Winston Prouty Way
Brattleboro, VT 05301

Phone:

(802) 257-7852

Power Failure Line:

(802) 257-4147

Fax:

(802) 258-2413

Website:

www.winstonprouty.org

Our Mission

The Winston Prouty Center for Child Development provides inclusive education and family support to promote the success of children and families.

Inside this issue:

<i>Note from Chloe</i>	1
<i>Office News</i>	2
<i>Board News</i>	2
<i>Community Page</i>	3
<i>CBS News</i>	4-5
<i>ELC News</i>	6-7
<i>Calendar</i>	8
<i>Charity Quiz Flyer</i>	9

Note from Chloe Learey, Executive Director

More Money for Early Education

In December we learned that Vermont is the recipient of another multi-million dollar investment in early childhood education. The award was announced in conjunction with The White House Summit on Early Education, and is in addition to the \$37 million Early Learning Challenge Grant we received last December, often referred to as the "Race to the Top" grant. Over the next 4 years we will receive \$33.4 million dollars to support quality pre-kindergarten education. It is good news for our state and our children that we will receive more federal money to support early childhood services, in this case early childhood education for four-year-olds who are at-risk, since it is another indication that the time is ripe for us to invest in early childhood. It is also good news since there will be a delay in implementing universal pre-kindergarten for those parts of the state that are not currently doing it. We are fortunate in our region to already have the 10 hours of per-K in place with most Supervisory Unions, and many early care and education programs are partners so families locally have access.

However, it is concerning that there is so much focus on early childhood education vs. supporting all aspects of early childhood (including education). This latest funding will target 4-year-olds rather than supporting the 0 to 3 years when 80% of the brain is developed in children. Early care and education is a critical piece of the puzzle as we consider how best to create environments that support optimal child development. It is not the only piece of the puzzle, or necessarily even a majority of it for many children. While quality early learning environments can compensate for some of the challenges a child encounters in other parts of their life it is a mistake to think it is enough. A child who is hungry may not be as available to learn; a child whose family has transportation issues may not be able to regularly attend; a child who does not have a secure attachment to primary caregivers may be struggling to have healthy relationships. All of these are important aspects of "school readiness", and these issues can be addressed through other pieces of the puzzle including family support, food security, housing, and physical and mental health. You cannot successfully support children without also working with families, so investing in young children requires investing in a continuum of services in order to truly pay-off. Early childhood services such as Family Supportive Housing and Children's Integrated Services at the Prouty Center are essential to the entire system and we must invest in the full spectrum of support.

Administration

802-258-7852

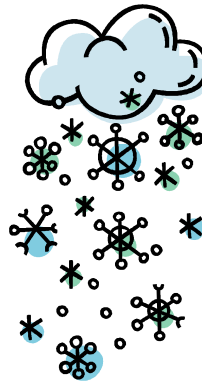
Chloe Learey	Executive Director	Ext. 11	chloe@winstonprouty.org
Lisa Whitney	Director of Operations	Ext. 12	lisa@winstonprouty.org
Angela Hoag	Office Manager	Ext. 10	angela@winstonprouty.org
Miles Shaw	Assistant		

Some Important Phone Numbers

Please make a note of them!

To reach the ELC after 4:30 pm, call 257-2101 ext. 23

To reach us during a power failure, call 257-4147



IN CASE OF INCLEMENT WEATHER:

Tune in to

WTSA (96.7 FM, 1450 AM, online at www.wtsa.net) or

WKTV (92.7 FM, 1490 AM, online at www.wkvt.com)

for Center closings or delays.

Decisions are typically made by 6:30am

If the center will be CLOSED.

Wish List

- *Boppy Pillows
- *Baby mirrors
- *Booster seats
- *Compost bin
- *1 Piece toddler snow suits
- *Kitchen table and chairs (adult size)
- *Cause & Effect toys (non battery operated)
- *Push toys
- *Rhino balls
- *Highchair

Board of Trustees

David Dunn (President)	Heather Golding
Karen Henry (Vice President)	Rachel Henry
Jon Neurock (Treasurer)	Frederic Noyes
Sarah Nohl (Secretary)	Shawna Parker
Sue Dyer	

Management Team

Chloe Learey, Executive Director
 Lisa Whitney, Director of Operations
 Alison Wheeler, CIS Coordinator
 Mary Coogan, Early Interventionist
 Sara Lovell-Allbee, Education Supervisor

Community Page

If you know of an event that may be of interest to the Prouty community, please email angela@winstonprouty.org with details. Thanks!



Located at: 20 Elliot Street Brattleboro, VT

Phone # 802-254-5212

OPEN Tuesday-Saturday 9am-1pm

Looking for something to do during the cold months of winter when it's not always easy to get outside? Check out KidsPLAYce !

Help Put More Food on the Table



In these tough times, many Vermonters worry about being able to afford the things they need. 3SquaresVT may be able to help. 3SquaresVT (formerly food stamps) helps people with limited income buy more food, like fresh veggies, fruits, and whole grains.

More than 90,000 Vermonters get benefits, but many more may qualify and don't know it. The income limit is \$1,801 per month for one person; it's \$3,678 for a family of 4. You may also have qualifying deductions. Vermonters of all ages are going without enough healthy food.

If you know someone struggling to make ends meet encourage them to apply for 3SquaresVT.

People can even apply online by visiting www.vermontfoodhelp.com . Please help by spreading the word. For more information about the program contact Southeastern Vermont Community Action (SEVCA Inc.) at 802 254-2795 in Brattleboro or 800-464-9951 / 802-722-4575 in Westminster.

Community Based Services (CBS) 802-258-2874

Emily Clever	Family Supportive Housing	Ext. 25	emily@winstonprouty.org
Crystal Blamy	Family Supportive Housing	Ext. 13	crystal@winstonprouty.org
Mary Coogan	Early Interventionist	Ext. 15	mary@winstonprouty.org
Jillsen Deignan	Developmental Educator	Ext. 24	jillsen@winstonprouty.org
Terrill Douglas	Maternal Child Health Nurse	Ext. 28	terril@winstonprouty.org
Kathy Hallock	Developmental Educator	Ext. 16	kathy@winstonprouty.org
Sally Pennington	Maternal Child Health Nurse	Ext. 28	sally@winstonprouty.org
Brandy Levesque	Inclusion Facilitator	Ext. 31	brandy@winstonprouty.org
Joanne Shaw	Community Resource Parent	Ext. 14	joanne@winstonprouty.org
Alison Wheeler	CIS Coordinator	Ext. 29	alison@winstonprouty.org
Kellyn McCullough	Family Support Worker	Ext. 21	kellyn@winstonprouty.org
Shelly Torunski	Developmental Educator	Ext. 30	shelly@winstonprouty.org

Volunteer: Teddi Tucci

News from Community Services:

The Children's Integrated Services program at The Winston Prouty Center is a resource for families when they have questions or concerns about their child's development during pregnancy, infancy and early childhood. CIS was created by the state of Vermont to help ensure the success of children and families through early supports and services. CIS is open to all families.

Rhianna Kendrick, one of our full time family support workers, has taken a position as the Assistant Director at the Brattleboro Area Drop In Center. Her last day will be on 1/2/15. She will be greatly missed, but we are very excited for this opportunity for her and look forward to continuing to work closely with her as a community partner.

HCRS has filled one open position on the ECFMH team. Shawn Lund has accepted the position of Early Childhood and Family Mental Health Case Manager-Behavioral Specialist and will be starting on January 5th. Shawn has a long history working in the early childhood education field with Early Education Services. She brings a wealth of skills working with families and their young children and we are very excited to have her joining the team. HCRS is still advertising for a team leader for ECFMH.

Kellyn McCullough had 4 homeless families on her caseload obtain their own apartments just in time to celebrate the holidays in their new home.

Emily Clever, Family Supportive Housing Coordinator, is in the final stages of securing three rental units (one 2BR and two 1BR apts) for Master Leasing with two local landlords. She has lined up at least one lease signing for the larger unit for a current Family Supportive Housing family. This pilot project is a collaborative effort with Brattleboro Housing Partnership and Morningside Shelter. Two families working with Emily will be moving from temporary transitional housing to permanent housing during the months of December and January.

Crystal Blamy, Family Supportive Housing Coordinator, anticipates having three homeless families on her caseload secure housing in the month of January!

Brandy Levesque attended the first of a three part workshop series, titled Each and Every Child: Framing the Discussion. On Thursday, January 15th, Mary Coogan and Shelly Torunski from Early Intervention will be joining Brandy for the second workshop, titled: Each and Every Child and Family: Functional Goals and Planning. The training description is: All young children need to develop the skills required for them to function and succeed at home and/or in an early care and education setting. For some children, developing these functional skills requires adults' thoughtful planning of intentional teaching and individualized learning opportunities. This workshop delves into identifying the child's functional goals and planning ways to support the child meeting those goals. The third part of the series which Brandy will attend is titled: Implementing Learning Opportunities that Support Inclusion.

Resources

State-wide community resources	Vermont 2-1-1	2-1-1	www.vermont211.org
Child care referrals and resources	Windham Child Care Association	802-254-5332	www.windhamchildcare.org
WIC	Vermont Department of Health	802-257-2880	www.healthvermont.gov
Mental health and substance abuse services	Health Care and Rehabilitation Services (HCRS)	1-888-888-5144	www.hcrs.org
Housing and other services for people in poverty	Southeastern Vermont Community Action (SEVCA)	802-254-2795	www.sevca.org
New Moms Network (Dawn Kersula, MA, RN)	Brattleboro Memorial Hospital	802-257-8278	E-mail: dkersula@bmhvt.org www.bmhvt.org
Local event listings and information	Parent Express	603-352-1234	www.sentinelsource.com/parent-express/

Early Learning Center

Education Supervisor

Sara Lovell-Allbee

Ext. 32 sara@winstonprouty.org

802-257-2101

Teaching Staff

EL1: Susan Heimer, Lyn Call

Ext. 20 susan@winstonprouty.org

EL2: Jordan Wyckoff, Maggie Sullivan, Katrina Irish

Ext. 18 jordan@winstonprouty.org

EL3: Ana Williams, Kim Jacques, Alfred Hughes Jr.

Ext. 22 ana@winstonprouty.org

EL4: Ylan Roy, Amy Fulton

Ext. 17 ylan@winstonprouty.org

Floaters: Kathy Wright, Martha Rath, Kelsey Carew

Non-Teaching Staff

Liz Martin

Paul Rossi

Volunteers

Susan Mandell



WELCOME

Jordan Wyckoff

EL2 Lead Teacher

Three Interesting Facts about Jordan



1. "I have a dog named Rylee. She is an English Mastiff and very cuddly. I also have three cats even though I'm allergic."
2. "I like to run and go to yoga."
3. "I started snowboarding this winter. It is still quite challenging for me, but I have so much fun doing it."

Music for Young children

“Sing Razzamataz!” Does this sound familiar to you? Are you bombarded with requests for songs from your child? Singing and dancing are favorite activities at school and at home, and can be an important part of your child’s day.

Songs can mark daily transitions, times of day, different seasons, or special occasions and holidays. At Prouty, we have a song for almost every transition, and many daily activities. We also sing songs about planting, swimming, eating sandwiches, and cooking food in a frying pan, among many others. We have walking songs, dancing songs, and jumping songs. Songs for Halloween, Thanksgiving, winter holidays, and birthdays.

Because music and speech utilize different parts of the brain, non-verbal children are just as likely to be drawn to, and excel at music.

Skills in music have been shown to help develop the brain, and later on can improve academic performance.

What can you do at home? Try having musical instruments available. Children are drawn to all kinds of instruments including any percussion instruments, guitars and ukuleles, autoharps, whistles, and small accordions.

You can take your children to performances, and have music in your home for your child to hear and sing to.

Some of EL2 teachers' favorite child friendly musicians: Peter and Mary Alice Amidon & family, Raffi, The Annie's, Laurie Berkner, any classical and folk music, and whatever you enjoy listening to!



Children enjoy a
Halloween ALL School
Sing with, Kelsey one
of our
floating teachers

ALL School sing is held
just about every Friday in
the Conference Room.

All classrooms gather
together to sing and dance
from about 10:15-10:30

If you would like to attend
for parent hours or just
because; let your
child’s teachers know :)

January

A HAPPY
NEW YEAR

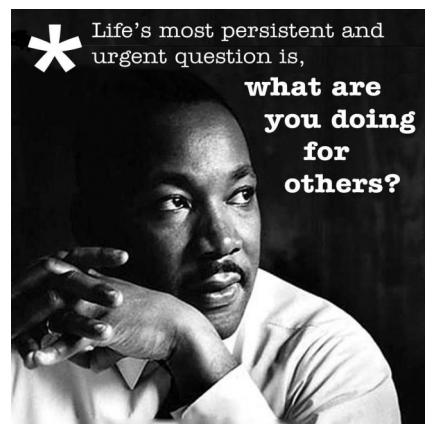
January Happenings

Weight Loss Awareness Month
National Thank You Month

January 1st
January 19th

New Year's Day
Martin Luther King Jr. Day

THANK YOU



Upcoming Events:

February 4: Center Closes at 3:30 for All Staff meeting

February 16: Center Closed for President's Day Holiday

JANUARY 2015

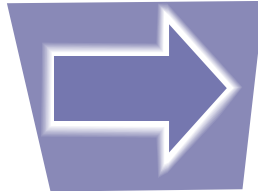
Sun	Mon	Tue	Wed	Thu	Fri	Sat
				1 Center CLOSED for Winter Break	2 Happy Bday Chloe!	3 Olivia is 5! Cameron & Sadie are 3!
4	5	6	7 Happy Bday Ana!	8	9	10
11 Rosajeane is 3! Aviv is 3!	12 Kiara is 2! Happy Bday Shelly!	13	14	15	16	17 Bryson is 3! Cody is 2!
18 Owen is 4!	19 Center CLOSED for Staff In-Service	20	21 Jordan is 5!	22	23	24
25	26 Marly is 2!	27	28	29	30	31



CHARITY QUIZ CHALLENGE

Brattleboro Sunrise Rota-

Come Support Our January
Charity Partner



New Location
American Legion
Post 5

32 Linden Street
Brattleboro, VT 05301



2nd Monday ~ Every Month

January 12th
6:15-8:45pm

BUFFET MEAL CATERED BY ENTERA CATERING

Featuring: Baked Chicken or Baked Black Bean & Cheese Corn
Enchiladas, Mexican Rice, Roasted Squash, Green Salad & Cookies

Up to 6 players per team
Couples Welcome
10 Fun packed rounds of
Questions including an
audio round, bonus round
& surprise round.

\$20 per person which
includes the buffet and
your donation to the
Winston Prouty Center

Reservations Recommended
Call 802-257-7244 ext. 114

